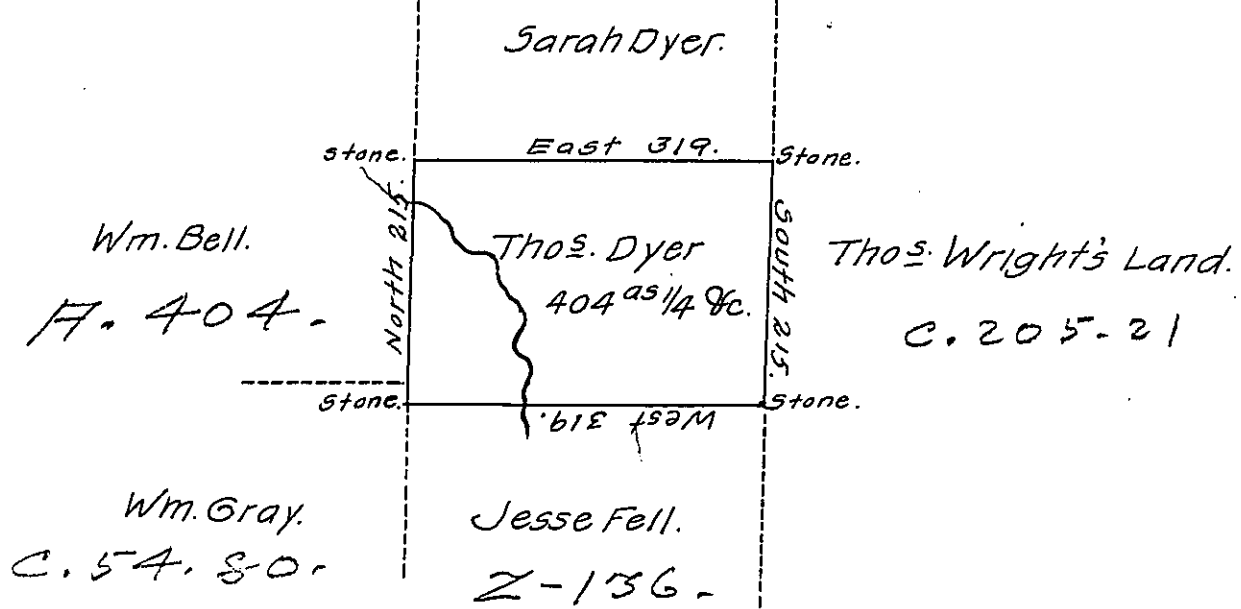


Denison -
Luzerne.

Pg - 358 -



Draft of a tract of land called—situate on the water of Lehi—Joining Land Surveyed for Jesse Fell & others in the County of Luzerne containing four Hundred & four acres ¹/₄ & allowance of six & Cent. for roads &c. Surveyed for Thomas Dyer the 27th. Day of June, 1792 in pursuance of a warrant dated the 4th. Day of April, 1792.

To Daniel Brodhead, Esqr, } by Wm. Gray, D.S.
Surv^r Genl. }

IN TESTIMONY that the above is a copy of the original remaining on file in the Department of Internal Affairs of Pennsylvania, made conformably to an Act of Assembly approved the 16th day of February, 1833, I have hereunto set my Hand and caused the Seal of said Department to be affixed at Harrisburg, this twenty fourth day of July, 1911.

Alvory Howell

Secretary of Internal Affairs.